

AUTO-*i* 700

Premium Diagnostic
Engineered for Professionals



Easy Access & Function Diagnostic for Automotive Service

AUTO-i 700

World Class Diagnostic Scanner with Touch Screen and Window O/S

FEATURES



FAST

- ▶ Cortex A8 1GHz/Cortex M3 120MHz Processor
- ▶ Optimized Software Size for Fast Update



RELIABILITY

- ▶ Perfect Compatibility with Carman Family
- ▶ Exceptional OE-Level Coverage : Asian, European, USA and Various Local Makers



EASY

- ▶ Optimized User-Friendly Menu
- ▶ Favorite and Recent System for Frequent Functions
- ▶ Full Text Description for DTC and Livedata
- ▶ Automatic Wi-Fi Update from AUTO-i Server
- ▶ Print Out Recorded Data with Wi-Fi Technology



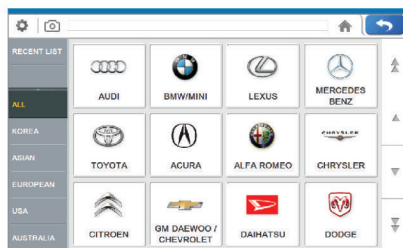
SMART

- ▶ Quick Searching
- ▶ Screen Capture and Memo
- ▶ Flight Record Replay
- ▶ ECU Coding and Programming
- ▶ Real-Time Livedata Text Capture
- ▶ Log-On Data Transfer for Quick Feedback
- ▶ Vehicle Maintenance Information

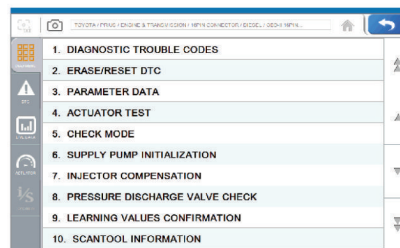
SPECIFICATION

AUTO-i 700			
Operating System	WinCE 6.0	Power Consumption	7.2W
Processor	Cortex A8 1GHz	Dimension (WxHxD)	250mm(9.84") x 180mm(7.09") x 45mm(1.77")
Internal Memory	512MB RAM	Weight	1.3kg(2.87lb)
External Memory	32GB MicroSD	Diagnostic Processor	Cortex M3 120MHz
Display	7.0" Touch Screen with 1024x600P Resolution	Operating Voltage	8~35V
Connectivity	RJ45 Ethernet Connection	Operating Temperature	0 to 45°C (32 to 113°F)
	WiFi(802.11 a/b/g/n)	Storage Temperature	-20 to 70°C (-4 to 158°F)
	USB : 2.0	Protocols	ISO 9142-2, ISO 14230-2, ISO 15765-4, SAE-J1850 PWM
	HDMI Output		CAN ISO 11898, Highspeed, Middlespeed,
USB Keyboard & Mouse Support	Lowspeed and Singlewire CAN, K/L-Line High Speed Serial,		
Power and Battery	Li-ion Polymer 4200mAh 2cell Battery		Flashing Code, Ethernet Protocol, Byte Protocol,
	Charging via 12V AC/DC Power Supply		Honda Diag-H Protocol, KWPT1281, TP2.0, TP1.6, J2610(Chrysler SCI)

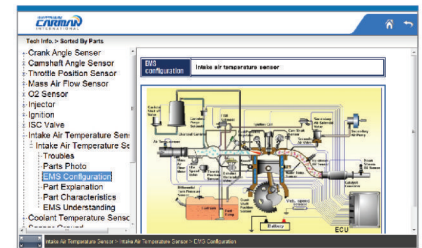
FUNCTIONS



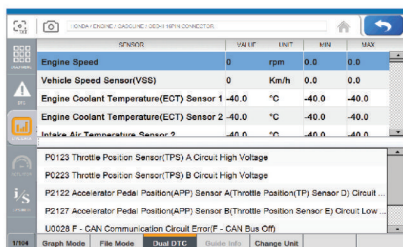
■ Brand Selection



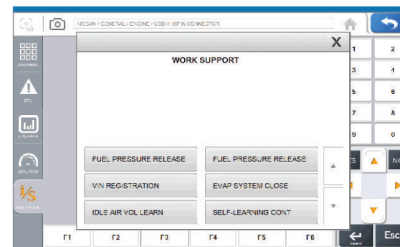
■ Menu Selection



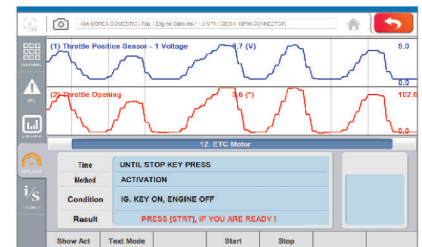
■ Maintenance Info



■ Sensor-DTC Dual



■ Special Function



■ Sensor-Actu. Dual



Main office: 2F, 144, Hyeonchung-ro, Dongjak-gu, Seoul, 06983, South Korea

Tel +82-2-2627-4530 Fax +82-2-852-4951 Mobile +82-10-8537-1875

E-mail sale@carmanit.com carmantech@carmanit.com www.carmanit.com